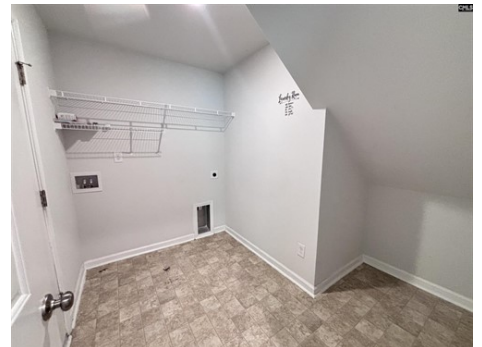




\$ 289,000



522 Hatteras Dr, Blythewood, SC 29016

- » Beds: 5 | Baths: 2 Full, 1 Half
- » MLS #: 609342
- » Single Family | 2,414 ft² | Lot: 5,663 ft²
- » More Info: [522HatterasDr.IsForSale.com](https://www.522HatterasDr.IsForSale.com)



Tricia Kim
 Laura Hooper
 (803) 699-7000 (Office)
 (803) 960-1615 (Tricia Kim, Realtor)
 (803) 446-3140 (Laura Hooper, Realtor)
tricia@fowlerteams.com

kW PALMETTO
 KELLER WILLIAMS, REALTY

Keller Williams Palmetto
 1523 Huger Street
 Suite B
 Columbia, SC 29201
 (803) 722-1900

FIVE (5) bedroom Habersham plan with the master suite on the main level with an attached 2-car garage. The front door entryway includes a powder room with coat closet & garage entry takes you to the mudroom/laundry room with ample storage space. This layout is centered around the kitchen, making it easy to stay engaged entertaining guests in the eat-in/dining area and the living room with beautiful luxury vinyl plank flooring through the foyer, eat-in, kitchen & living room. Kitchen features include bar seating, granite counter-tops, with sleek white cabinets, a pantry and stainless steel appliances. The primary suite on the main level offers a private bathroom with a 5 walk-in shower, 2 spacious linen closets, double sink, comfort height vanity, water closet & walk-in closet. THREE additional secondary bedrooms upstairs are wired for ceiling fans, two with walk-in closets & share a bathroom Corian counter, double sink vanity, tub/shower. Pull down attic storage space is located in the hallway. This home also features a tankless water heater, irrigation system and garage door opener. Built to be energy efficient in order to keep utility bills low. The back patio and yard are a blank slate awaiting the new owner to create an enjoyable outdoor area for entertaining, relaxing, gardening &/or grilling. The Windfall community in Blythewood - a conveniently located, low-maintenance community with easy access to Killian

